

Judging Interpretation

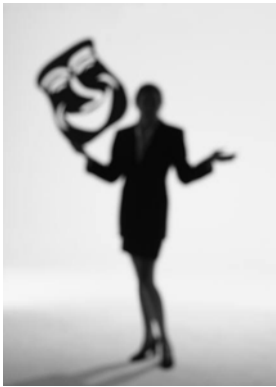


Ballot Instructions

The art of interpretation is to be regarded as recreating the characters in the story presented and making them seem living and real to the audience. Presentation shall be from memory and without the use of physical objects or costume.

A selection for interpretation must be a cutting from a single literary work: one novel, or one short story, or one play, or one or more poems. Monologues are acceptable. During the presentation, contestants must name the author and the book or magazine from which the cutting was made. Adaptation may be for the purpose of transition.

In Duo Interpretation each of the two performers may play one or more characters, so long as performance responsibility in the cutting remains as balanced as possible. [If the selection is prose or poetry and contains narration, either or both of the performers may present the narration.]



The selection should be judged for its appropriateness as contest material and its suitability to the particular contestant using it. The use of good literature should be noted favorably and a selection devoid of literary merit graded lowest.

This is a contest in interpretation. The contestants should be evaluated on poise, quality and use of voice, inflections, emphasis, pronunciation, enunciation, physical expression, and especially the ability to interpret characters correctly and consistently. Narrative, if included, should be vivid and animated so as to be an interesting and integral part of the story rather than just "filler" between portions of dialogue.

The final test of good interpretation is the ability to use all these factors so successfully and unobtrusively that the hearer forgets that this is a contest and in a created atmosphere is carried away to the time and place of the story being unfolded.

The time limit in Interpretation events is 10 minutes with a 30 second grace period. If the judges in the round agree that the student has gone beyond the grace period, the student may not be ranked 1st, but need not be ranked last based on time. The ranking is up to each individual judge's discretion. Judges who choose to time are to use accurate (stopwatch function) timing devices. No minimum time is mandated.

Event Rules

- Divisions.** Separate contests will be conducted in Dramatic, Humorous, and Duo Interpretation, each presented as memorized selections and without the use of physical objects or costume. Presentation must not exceed 10 minutes.
- Length:** The time limit in Interpretation Main Events (Humorous, Dramatic and Duo Interpretation) is 10 minutes with a 30 second grace period. If the judges in the round agree that the student has gone beyond the grace period, the student may not be ranked 1st, but need not be ranked last based on time. The ranking is up to each individual judge's discretion. Judges who choose to time are to use accurate (stopwatch function) timing devices. No minimum time is mandated.
- Selections:** Selections used in these contests must be cuttings from published, printed novels, short stories, plays or poetry. Recorded material (video tape, DVDs, audio tape, CDs or phonograph recordings) or material from the Internet that is not published and printed is prohibited. Original material published in a high school publication such as a newspaper, literary magazine, or yearbook is prohibited. During the presentation the contestant/team must name the author and the book or magazine from which the cutting was made. Monologues are acceptable in Dramatic and Humorous Interpretation. In Duo Interpretation each of the two performers may play one or more characters so long as performance responsibility in the cutting remains as balanced as possible. If the selection is prose or poetry and contains narration, either or both of the performers may present the narration.
- Adaptations:** Adaptations may only be used for the purpose of transition. The gender stated by the author must be honored. However, a female contestant may play a male role, and a male contestant may play a female role.

5. **Focus:** In Dramatic and Humorous Interpretation, use of focal points and/or direct contact with the audience should be determined by the requirements of the literature being interpreted. In Duo Interpretation, focus may be direct during the introduction [the performers may look at each other] but must be indirect [off-stage] during the performance itself.
6. **Source:** A cutting must be a single work of literature: one short story or one play or one novel or one or more poems. The original published source of any selection used in Dramatic, Humorous, or Duo must be immediately available at the tournament as well as a complete script of the cutting used. A complete script of the cutting includes:
 - a. A photocopy of every page from which any line of the cutting is taken; pages are to be in the order in which they are performed.
 - b. All words used from the script should be highlighted (any words/lines not used should be left unmarked).
 - c. Any word changes (to eliminate profane language) and/or additions (for transition) must be indicated clearly in ink.
7. **Caution:** It is the affirmative duty of each coach and each student entered in NFL Interpretation contests to determine absolutely that the cutting being performed meets NFL rules.
8. **Re-Use:** A student may not use a cutting from a work of literature the student used in NFL district or NFL national competition in any previous contest year. A student entered in two events may not use the same selection of literature in both events.

